



## TECHNICAL INFORMATIONS

# CAMPÂNULA ATEX

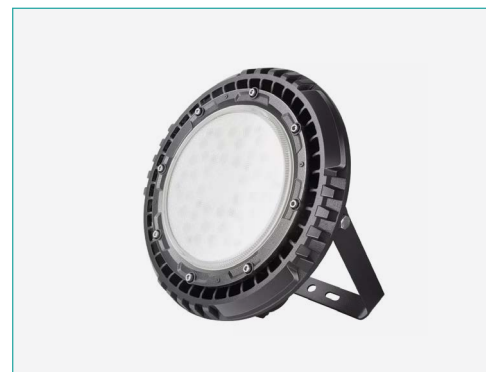
## 60W 5000K



À prova de explosão pode ser amplamente utilizada para aplicações de materiais químicos inflamáveis e explosivos.

Our explosion proof light can be widely used for applications of flammable and explosive chemical materials.

Nuestra luz a prueba de explosiones se puede utilizar ampliamente para aplicaciones de materiales químicos inflamables y explosivos.



### ILAR-01457

#### REFERENCE

LED BRAND	CREE JK3030
Body Material	Die-Cast Aluminum ADC12
Housing Colour	Black
Nominal Lifetime (EOL end of life)	50000H
Mounting Type	NO
Dimmable	YES
Thermal Conductivity	96 W/m-K

#### DIMENSION & WEIGHT

Width	Ø354mm
Height	312mm
Weight	8.5Kg
Packaging Unit	1 pcs
Gross Weight (kg)	9.3kg

#### PHOTOMETRICAL DATA

Total Luminous Flux	9000lm
Luminous Efficacy	150lm/W
Beam Angle	120°
Colour Temperature	5000K
Colour Rendering Index	>70 (80&90 for option)
Colour Consistency	-
Functions	PWM DALI 0/1-10V

#### ELECTRICAL AND OPERATING DATA

Nominal Wattage	60W
Nominal Voltage	100-277V
Operating Frequency	50-60Hz
Power Factor	>0.95
Operating Temperature	-40°C to 60°C
Drive	Meanwell HBG
Driver Efficiency	>92%
ON/OFF Cycles	100.000

#### ENERGY LABEL & STANDARS

Energy Label	A+
Thermal Conductivity	96 W/m-K
Type of Protection	IP66
Protection Class	Class II
Protection Class IK (shock resistance)	IK08
Protection	OTP, OCP, OVP, SCP
Surge Protection	6KV
TM21	L90B10>50,000H
Corrosion Proof	WF2

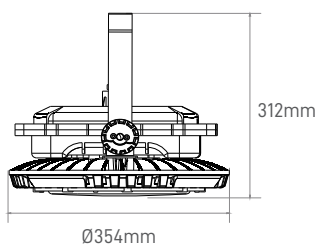
#### CERTIFICATIONS

CE	YES
2014/30/EU (EMC Directive)	YES
2014/35/EU (LVD Directive)	YES
ROHS	YES
Warranty	5 YEARS

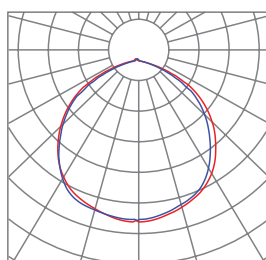


I II 2G Ex eb mb IIC T4 Gb  
I II 2D Ex tb IIIC T(95°C) Db

#### SIZE



#### BEAM ANGLE



#### ATEX RATED LIFTING AND HANDLING EQUIPMENT



ATEX HAZARDOUS GAS ENVIRONMENTS: ZONE 1



ATEX HAZARDOUS GAS ENVIRONMENTS: ZONE 2



ATEX HAZARDOUS DUST ENVIRONMENTS: ZONE 21



ATEX HAZARDOUS DUST ENVIRONMENTS: ZONE 22

Designed by Aronlight in Portugal. Made in PRC

